



**BEITER**  
BUILD BETTER

**PROFESSIONAL LASER LEVEL**



Designed in USA

**BEITER TECHNOLOGIES USA LLC**  
[www.beiterlaser.com](http://www.beiterlaser.com)



BEITER LASER. is originated from an inspiration and vision to modernize the home renovation experience by building better homes and better lives.

Beiter is a profound international brand of Woodwell Group, a 2 generation business over 40 years of experience in manufacturing and distributing professional construction tools. Intention Beiter is based in California has launched off at numerous trade shows. Currently, Beiter serves the Americas, Europe, Asia, Australia and Middle East region.

The Beiter brand is originated from the German word "bauarbeiter", which means professional home builder. It aims to focus on users that from home improvement builders to professional contractors, to large scale construction projects.



## Beiter Product Range:

### Laser measuring Tools

- Laser Levels
- Cross Lasers
- Line Lasers
- Rotating Lasers
- Home Laser
- Laser Distance Meters
- Automatic Optical Level

### Tripods & Rptating Base

- Elevating Tripod
- Builders Tripod
- Telescopic Leveling staff
- Ceiling to floor pole
- Magnetic Wall Mount
- Rotating position base

**We provide both Beiter Standard package & OEM design package service.**

## **BART-3DG PRO**

Beiter Classic 3D Laser level



**The classic model accept OEM design ,  
please contact us for further information.**



# BART-3D PRO

# BART-3DG PRO

360° Self-leveling tri-plane Green laser level



**Type C**  
ECO design with type C charging



**STRONG**  
Aluminium window frame

## Technical data

Working Range	Red Laser: 100ft (30m) Green Laser: 130ft (40m) 230ft (70m) working range with receiver
Accuracy	±1/4 in @ 100 ft (2mm @ 10m)
Self-leveling range	±4°
Laser class/ Wavelength	Class II Red line: 660nm Green line: 532nm
Waterproof/ dustproof	IP54
Power supply	3.7V Li-ion battery/ 4 x AA batteries / Type C charger (AA batteries not included in some countries)
Operating temperature	14° F / -10° C ~ 104° F / 40° C
Incline mode	Transport Lock & Individually shiftable function
Out-of-level-indication	Optical signal and Audio alert
Tripod thread	1/4" & 5/8"

# BART-3DGS



## Includes:

- Laser x1
- Li-ion Battery x1 (or 18650 battery x2)
- charger x1
- Accessories: Optional
- Package: Pouch bag/ Hard carrying Case of choice



**NEW**  
LASER LEVELS

**TIGE-3DG**



# TIGE-3DG

## 360° Self-leveling Tri-Plane Green Laser Level



Ultra long working hour

### Technical data

Working Range	Red Laser: 100ft (30m) Green Laser:130ft(40m) 230ft (70m) working range with receiver
Accuracy	±1/4 in @ 100 ft (2mm @ 10m)
Self-leveling range	±3°
Laser class/ Wavelength	Class II Red line: 660nm Green line: 532nm
Waterproof/ dustproof	IP54
Power supply	Li-ion battery
Operating temperature	14° F / -10° C ~ 158° F / 70° C
Incline mode	Transport Lock & Individually shiftable function
Out-of-level-indication	Optical signal and Audio alert
Tripod thread	1/4"



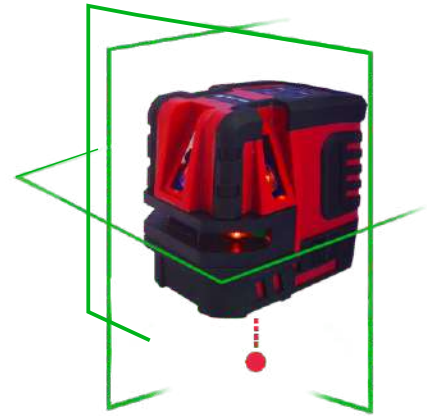
# MC-3D/MC-4D

Compact 360° Self-leveling Tri-Plane Green Laser Level

## Technical data

Working Range	40m
Accuracy	±1/4 in @ 100 ft (2mm @ 10m)
Self-leveling range	±3°
Laser class/ Wavelength	Class II/ 532nm
Waterproof/ dustproof	IP54
Power supply	Li-ion battery
Operating temperature	14° F / -10° C ~ 158° F / 70° C
Incline mode	Transport Lock & Individually shiftable function
Out-of-level-indication	Optical signal and Audio alert
Tripod thread	1/4"





\*WAVE-COMBI as illustrated



# WAVE-10G: Full Green laser lines WAVE-10/10S: Full Red laser lines

## Technical data

Working Range	Red Laser: 32ft (10m) Green Laser: 60ft(20m) 230ft (70m) working range with receiver
Accuracy	±1/4 in @ 100 ft (2mm @ 10m)
Self-leveling range	±4°
Laser class/ Wavelength	Class II Green line: 510-520nm Red line: 635nm Plumb dot: 650nm
Waterproof/ dustproof	IP54
Power supply	3.7V Li-ion battery/ 4 x AA batteries/ DC charger (AA batteries not included in some countries)
Operating temperature	14° F / -10° C ~ 104° F / 40° C
Incline mode	Transport Lock & Individually shiftable function
Out-of-level-indication	Optical signal and Audio alert
Tripod thread	1/4" & 5/8"

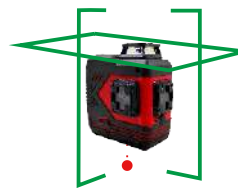


## BOX-CV2G

Full Green laser lines

## BOX-CV2

Full Red laser lines



### Technical data

Working Range	Red Laser: 32ft (10m) Green Laser: 60ft(20m) 230ft (70m) working range with receiver
Accuracy	±1/4 in @ 100 ft (2mm @ 10m)
Self-leveling range	±4°
Laser class/ Wavelength	Class II Red laser: 638nm for cone, 635 for line for line and 660nm for plumb point. Green laser: 532nm for cone & line, 660nm for plumb point.
Waterproof/ dustproof	IP54
Power supply	3.7V Li-ion battery/ 4 x AA batteries/ DC charger (AA batteries not included in some countries)
Operating temperature	14° F / -10° C ~ 104° F / 40° C
Incline mode	Transport Lock & Individually shiftable function
Out-of-level-indication	Optical signal and Audio alert
Tripod thread	1/4" & 5/8"



# BRUNO-XP BRUNO-XPG

Self-leveling Crossline Red/Green laser with Ceiling Point and Plumb Point

## Technical data

Working Range	Red Laser: 100 ft.(30m) indoor Green Laser:130 ft(40m) indoor 230ft (70m) working range with receiver
Accuracy	±1/4 in @ 100 ft (2mm @ 10m)
Self-leveling range	±4°
Laser class/ Wavelength	Class II Red laser: 635nm for line & dots; Green laser: 515nm for line & dots; 660nm for plumb point.
Waterproof/ dustproof	IP54
Power supply	3.7V Li-ion battery/ 4 x AA batteries/ DC charger (AA batteries not included in some countries)
Operating temperature	14° F / -10° C ~ 104° F / 40° C
Incline mode	Transport Lock & Individually shiftable function
Out-of-level-indication	Optical signal and Audio alert
Tripod thread	1/4" & 5/8"



# BRODY-X4P BRODY-X4PG

Self-leveling 4-point Alignment Red/Green 2-in-1 Laser with 4 points plus a cross-line combo

## Technical data

Working Range	Red Laser: 100 ft.(30m) indoor Green Laser:130 ft(40m) indoor 230ft (70m) working range with receiver
Accuracy	±1/4 in @ 100 ft (2mm @ 10m)
Self-leveling range	±4°
Laser class/ Wavelength	Class II Red laser: 635nm for line & dots; Green laser: 515nm for line & dots; 660nm for plumb point.
Waterproof/ dustproof	IP54
Power supply	3.7V Li-ion battery/ 4 x AA batteries/ DC charger (AA batteries not included in some countries)
Operating temperature	14° F / -10° C ~ 104° F / 40° C
Incline mode	Transport Lock & Individually shiftable function
Out-of-level-indication	Optical signal and Audio alert
Tripod thread	1/4" & 5/8"



## BMOTO-8G

- 2-in-1 Laser with 4 points plus a cross-line.
- Ultra-bright green laser points and lines.
- For horizontal leveling, vertical alignment, squaring, layout, and plumb point transfer.





# BMOTO-8G

Beiter Green Electronic Laser System

## Technical data

Working Range	130ft(40m)indoor 230ft (70m) working range with receiver
Accuracy	±1/4 in @ 100 ft (2mm @ 10m)
Self-leveling range	±3°
Laser class/ Wavelength	Class II GREEN LINE:510-540NM Plumb dot:650nm
Waterproof/ dustproof	IP54
Power supply	3.7V Li-ion battery/ 4 x AA batteries/ DC charger (AA batteries not included in some countries)
Operating temperature	14° F / -10° C ~ 104° F / 40° C
Incline mode	Transport Lock & Individually shiftable function
Out-of-level-indication	Optical signal and Audio alert
Tripod thread	5/8"



## LD-548

Professional 5 line Laser Level

Working Range	130 ft(40m) indoor
Accuracy	±1/4 in @ 100 ft (2mm @ 10m)
Self-leveling range	±5°
Laser class/ Wavelength	Class II/ 520nm
Power supply	2 x Li-ion batteries/ dry battery
Tripod thread	5/8"



## RL-306

Professional 5 line Laser Level

Working Range	130 ft(40m) indoor
Accuracy	±1/4 in @ 100 ft (2mm @ 10m)
Self-leveling range	±4°
Laser class/ Wavelength	Class II/ 532nm
Power supply	Li-ion battery/DC charger
Tripod thread	1/4" & 5/8"



## ML-5G

Professional 5 line Laser Level

Working Range	130 ft(40m) indoor
Accuracy	±1/4 in @ 100 ft (2mm @ 10m)
Self-leveling range	±4°
Laser class/ Wavelength	Class II/ 532nm
Power supply	Li-ion battery/DC charger
Tripod thread	1/4" & 5/8"



## G4168

Professional 5 line Laser Level

Working Range	130 ft(40m) indoor
Accuracy	±1/4 in @ 100 ft (2mm @ 10m)
Self-leveling range	±4°
Laser class/ Wavelength	Class II/ 532nm
Power supply	Li-ion battery/DC charger
Tripod thread	1/4" & 5/8"



## WT-230G

Professional 5 line Laser Level

Working Range	130 ft(40m) indoor
Accuracy	±1/4 in @ 100 ft (2mm @ 10m)
Self-leveling range	±4°
Laser class/ Wavelength	Class II/ 532nm
Power supply	Li-ion battery/DC charger
Tripod thread	1/4" & 5/8"



Smart size rotary laser

# RR3605 / GR3605

Self-leveling Red/Green Beam Rotary Laser Level

## Technical data

Laser Features	Motorised horizontal and vertical scanning
Working Range with receiver(m)	Red laser:400m(diameter) Green laser:600m(diameter)
Accuracy	±1/16"@100ft.(±0.05mm/m)
Self-leveling range	±5°
Laser Class/wavelength	Class 3R 635nm-7mW for red laser 520nm-30mw for green laser
Water proof/Dustproof rating	Ip66
Horizontal laser angle	360°
Vertical laser angle	360°
Tripod Thread	5/8"
power Supply	Li-ion Batteries
Operating Temperature	Red laser:-10°C-45°C Green laser:-10°C-50°C
Weight(with battery)	1656g
DC charger	Yes
Out-Of-Level indication	Optical signals
Incline Mode	Yes



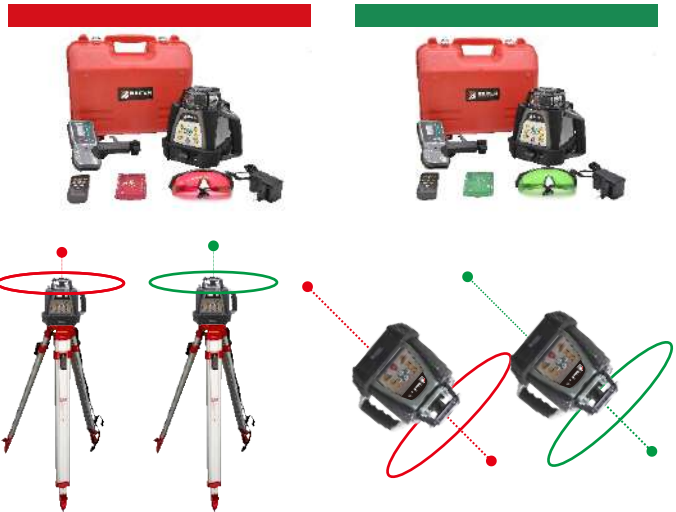


# RR3603 / GR3603

Self-leveling Red/Green Beam Rotary Laser Level with Robust Housing Design

## Technical data

Laser Features	Motorised horizontal and vertical scanning
Working Range with receiver(m)	Red laser:400m(diameter) Green laser:500m(with laser detector)
Accuracy	±1/16"@100ft.(±0.05mm/m)
Self-leveling range	±8°
Laser Class/wavelength	Class 3R 635nm-7mW for red laser 520nm-30mw for green laser
Water proof/Dustproof rating	Ip66
Horizontal laser angla	360°
Vertical laser angle	360°
Tripod Thread	5/8"
power Supply	Li-ion Batteries
Operating Temperature	Red laser:-10°C-45°C Green laser:-10°C-50°C
Weight(with battery)	1656g
DC charger	Yes
Out-Of-Level indication	Optical signals
Incline Mode	Yes

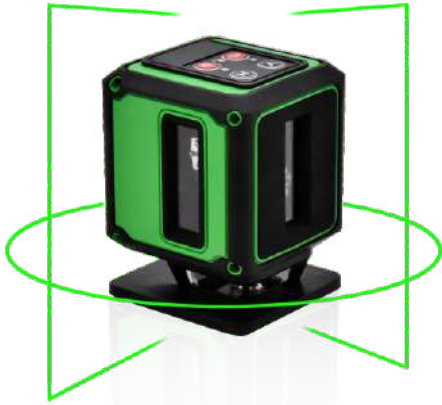


# RR3602/GR3602

Beiter Motorized Dual-direction Rotating Lasers

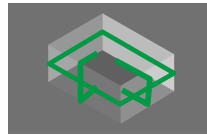
## Technical data

Laser Features	Motorised horizontal and vertical scanning
Working Range with receiver(m)	Red laser:500m(diameter) Green laser:800m(diameter)
Accuracy	±1/16"@100ft.(±0.05mm/m)
Self-leveling range	±5°
Laser Class/wavelength	Class 3R 635nm for red laser 532nm for green laser
Water proof/Dustproof rating	Ip65
Horizontal laser angla	360°
Vertical laser angle	360°
Tripod Thread	5/8"
power Supply	4xNiMH rechargea ble batteries
Operating Temperature	Red laser:-10°C-45°C Green laser:-10°C-50°C
Weight(with battery)	2kg
DC charger	Yes
Out-Of-Level indication	Optical signals
Incline Mode	Yes



# BAJ-CV2G

PROFESSIONAL MULTI-LINE FLOORING LASER



Two vertical lines  
One 360° line (2 cross lines)



## Technical Specifications

Wavelength	Green line: 510-540nm Green cone: 532/520nm		Auto level range	±
Laser class	Class2		Accarucy	±1/4 in@100(ft)(2mm@10m)
Working range	without detector	with detector	power Supply	3xAAx1.5V Li-ion battery DC charger (tybe-C USB cable)
	100t. (30m)	64. (50m)	Screw abaptor	1/4"
Water proof/Dustproof	IP54		Transport lock	Yes
Working temperature	14°/F~10°C~104°F/40°C		Lndividually shiftable function	Yes
			Out-Of-Level indication	Optical signals and Audio alert



# BAJ-3DG

PROFESSIONAL MULTI-LINE FLOORING LASER



FEATURES  
3 \* 360°green laser lines

### Small, handy, fast and easy!

- World's most compact professional green laser with 360° x 3 green laser . Everyone's Must-have!
- Extremely bright.
- Compatible with laser receiver. Working range 70m
- Designed Ideal for flooring and carpentry
- Lock function for tilted application

## Technical Specifications

Wavelength	Green cone: 532/520nm		Accarucy	±1/4 in@100(ft)(2mm@10m)
Laser class	Class2		power Supply	3xAAx1.5V Li-ion battery DC charger (tybe-C USB cable)
Working range	without detector	with detector	Screw abaptor	1/4"
	100t. (30m)	64. (50m)	Transport lock	Yes
Water proof/Dustproof	IP54		Lndividually shiftable function	Yes
Working temperature	14°/F~10°C~104°F/40°C		Out-Of-Level indication	Optical signals and Audio alert
			Auto level range	±



# BOL-32X

Beiter 32x Automatic Optical Level



## Specification

Model No.	32X
Image	Erect image
Objective aperture	≥42mm
Min.focusing distance	0.3mm
Stadia multiplications constant	100
Stadia additive constant	0
Resolution	≤4"
Working range	15'
Compensating error	≤±0.3"/1'
Setting accuracy	≤±0.5"
Scale graduation range	360°/400G
Scale minimum value	1" /1gon
GO/RE observations error	±2mm/km
Sensitivity of circular bubble	8'/2mm
Base screw	M16 or 5/8" X1/11" (optional)
Environmental temperature	-25°C to ±50°C

## Features

### The most accurate optical levels on site

- Flexibility - The BOL series is designed for all types of surveying tasks, including routine leveling on construction sites, check or monitor buildings, railways or roads.
- Highest accuracy and reliability. The top-class optical quality of Beiter Laser System delivers a high contrast image and precise reading even under unfavorable light conditions.
- High temperature stability and fast set-up - Use the coarse movement of the focusing knob for rapid setting with minimum turning. Fine movement gives final touch a perfect image.



**WT3DG-F**



**PS21**



**WP22G**



**WG21**



**TED-L21**



**TED-3D**



**TED-4D**



**PT3DG-COMPACT**



**MX2D**



**MX3D**



**MX4D**



# LASER DISTANCE METER

## BR-T40/60/80

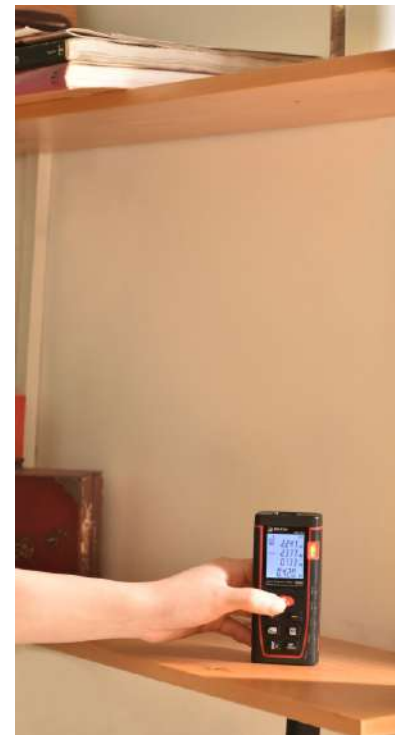


## Features

- Measures distance, area, volume, and pythagoras
- Addition and subtraction function
- Backlit LCD screen
- Delayed measurement function
- Continuous measurement tracking
- Auto power off

## Specifications

- Accuracy:  $\pm 2$  mm
- Laser class: 2 (<1 mW 635 nm)
- Operating distance: 0.05-40 m
- Operating temperature: 0-40°C
- Max storage: 30 units
- Power source: 2 x 1.5V AAA
- Memory record: 100 measurements
- Weight (including battery): 110g
- Dimension: 112 x 50 x 25mm



## Package

- Laser Distance Meter(1)
- Power supply AAA (2)
- User's manual (1)
- Portable bag (1)
- Hand strap (1)
- Giftbox(1)





# DLD802

## Professional laser receiver

### Specification

Leveling Accuracy (Hing):	1mm
Leveling Accuracy (Normal):	2mm
Leveling Accuracy (Low):	5mm
Laser Reception Window Width:	130mm
Working radius:	≤350m
Bubble Vial Accuracy:	30' / 3nm
Operation Time:	24h(no LCD back light)
Auto Power Off (with NO Signal Detected):	30min
Power Supply:	4 X AA batteries (Alkaline)
IP Supply:	IP56
Operating Temperature Range:	-10°C~50°C
Storage Temperature Range:	-20°C~70°C



# LR-70

## Laser Receiver with clamp



# LR-90G

## Laser Receiver with clamp



# LR-10GS

## Laser Receiver with clamp

- LED light indicator.
- Sensor panel and speaker.
- Best within 1-70m (5-220ft) range.

- LR-70** suits all BEITER red construction professional linear lasers with detector mode.
- LR-90G** suits all BEITER green lasers in 275Hz frequency with detector mode.
- LR-10GS** suits all BEITER green lasers in 5K Hz frequency with detector mode.



**NEW**  
accessory!

One-button  
quick change screw



Available for 1/4" or 5/8" thread

# LWP-MK

## Versatile "Yoga" Magnetic Wall Mount

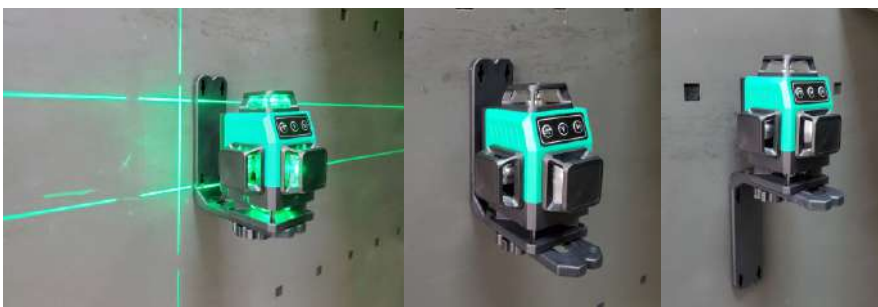
### 5 KEY BREAKTHROUGH!

1. Interchangeable 1/4" and 5/8" thread\*  
(Ship with 1/4" by default, 5/8" at request)
2. Mount to a tripod to function as a reclining tripod.
3. Super heavy duty with rare earth magnet. Max. weight: 10lbs
4. Flexible angle adjustment
5. Extended length for extra support.  
(can lift a rotary laser)



# LWP-MJ

1/4" thread



# Aluminum Surveying Tripod

## BT160FH/DH

### EXTENDABLE

The Beiter BT160FH/DH tripod provides extendable height adjustments so the user can expand tripod up to 63 inches for different height applications.

### ADJUSTABLE

The tripod features a steady adjustable base that swivels, adjusts, and tightens product for steady measurement applications.

### PORTABLE

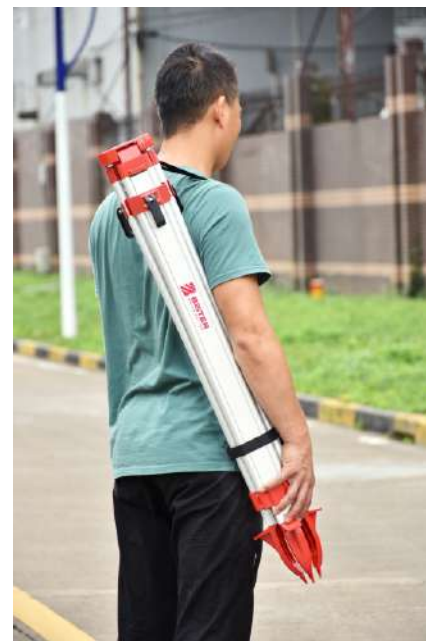
The Beiter BT160FH/DH is portable and lightweight with collapsible legs and built-in strap. At only 8 lbs. the tripod is easy to store and transport.

### STABILITY

The Beiter BT160FH/DH tripod provides an adjustment system that tightens the tripod for increased stability at the user's desired height.

### VERSATILE

Industry standard 5/8-inch x 11 mounting threads with both flat head and domed head design, the The Beiter BT160FH/DH is universal with a string hook for plumb bobs as well.



# Aluminum Surveying Tripod

## Model: BT160

### Specifications

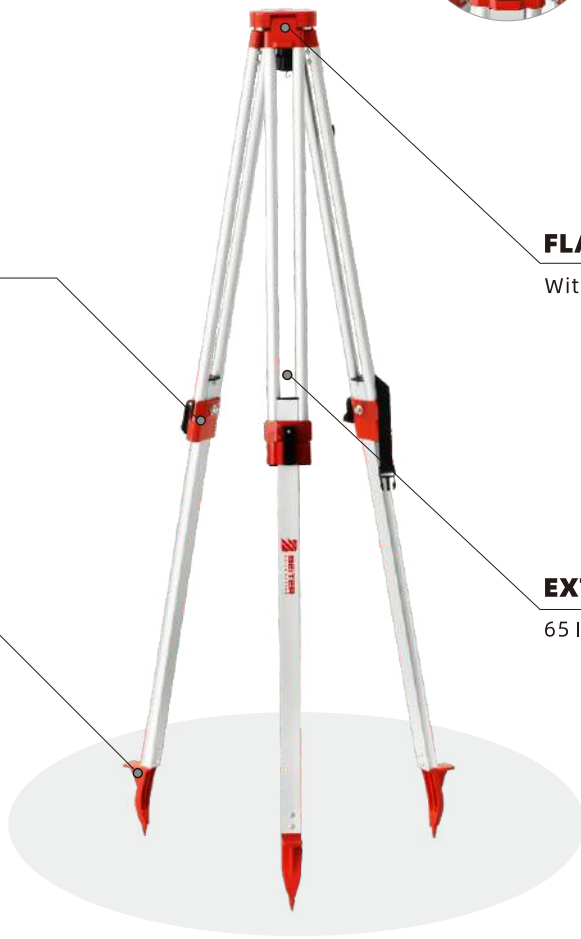
Closed Height	38in.(97cm)
Extended Height	63in.(160cm)
Material	Aluminum
Weight	8 lbs



**BT160FH**  
FLAT HEAD TRIPOD



**BT160DH**  
DOMED HEAD TRIPOD



### LIGHTWEIGHT AND DURABLE

Aluminum Design hinges, clamps and shoe casting.

### FLAT, DOMED, ELEVATOR HEAD TYPE

With standard 5/8-inch x 11 mounting threads

### PAINTED SHOE CASTING

For durable and long lasting finish.



### EXTENDABLE HEIGHT

65 IN. extended height

### STRING HOOK

For a plumb bob



### QUICK-CLAMP RELEASE

Allows easy setup and take-down



### ELECTROSTATIC POWER-PAINTED CASTING

Provides a durable, long-lasting finish



## Premium wall mount / base



**NEW**  
accessory!

**LWP-MK**



**NEW**  
accessory!

**LWP-MJ**

1/4" thread



**LWP-EWM**



**LWP-PMX**

Heavy Duty Magnetic  
Rotating Wall Mount



**L-Clamp**

Multi-angle base  
1/4" adaptor



**L213B-RB**

Rotating Base  
with Angle Scale



**LB-FRB1**

Fine-tuning  
Rotating Base

Rotates 360° by the precision of  
a fine adjustment knob, while staying  
centered on the plumb point

## Professional Tripods



**T102/ T120/ T150**

1 m/L.2m/L.5m  
Elevating Tripod



**T160MX-INC**



**T180MX-IN**



**BT160FH/ BT160DH**

1.6m Builders Tripod



**BE-LASERROD**



**BE-STAFF(3M/ 5M)**

Telescopic leveling staff  
5m 5-section 2-sided staff



**BEITER**  
B U I L D B E T T E R

## **AUTHORIZED DISTRIBUTOR**



## **Beiter Technologies USA LLC.**

2309 Noriega St, San Francisco, CA 94122

1-415-404-9349

Email : [info@beitertools.com](mailto:info@beitertools.com)

[www.beiterlaser.com](http://www.beiterlaser.com)/[www.beitertools.com](http://www.beitertools.com)

Woodwell Tools Manufacturing Group

5 Shunfu Road East, Heshun Hegui Industrial Estate Phrase B, Lishui Town,  
Nanhai District, Foshan City, Guangdong 528241, China

Jingxigan Road, Wuzhong District, Suzhou, China

Tel: +86 (757) 8511 3370

Fax: +86 (757) 8511 4668

Email: [info@mujingfang.com](mailto:info@mujingfang.com)